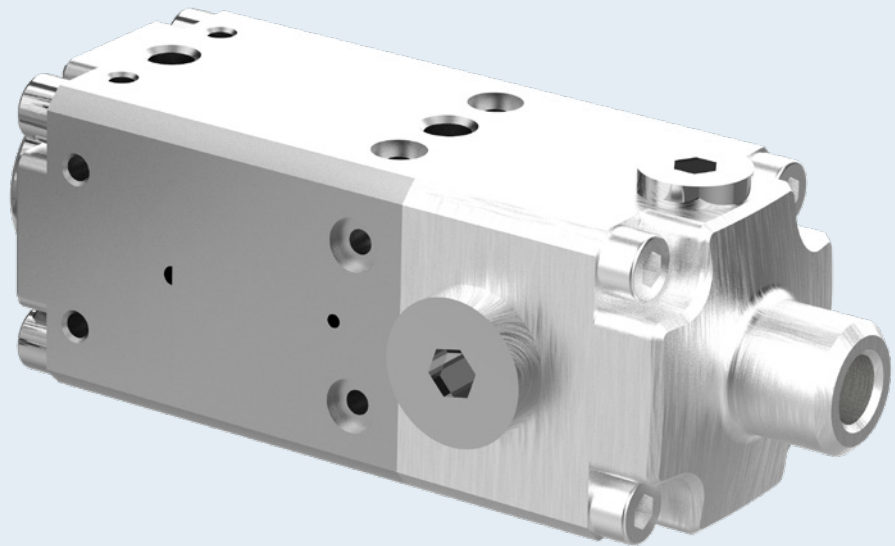


Available
in 3 different
sizes



Membrane Outlet Valve

For reliable
pressure-time dosing
of reactive media

WMAV

Highlights/ Benefit

- Innovative, low-wear design
- Suitable for 1K applications
- Control of the dispensing process via a higher-level control system
- Continuous process monitoring through the connection of additional sensors possible
- Integration of heaters possible

For high-viscosity media such as polyurethanes, adhesives, acrylates, epoxies, silicones, etc.

The robust WMAV outlet valve with snuff-back effect for clean media cut-off.

The Walther Membrane Outlet Valve (WMAV) is designed for a wide range of viscosities, making it suitable for the application of various low- to high-viscosity media. The valve's structural features allow for the processing of demanding, abrasive, and reactive media.

For example, the special membrane design prevents ambient air from entering the valve. This is particularly advantageous when processing air-sensitive media, such as certain adhesives that could otherwise prematurely cure, clogging and damaging the valve. The membrane also ensures a one hundred per cent airtight seal without any media leakage into the environment.

The use of stainless steel for all media-contacting parts ensures high resistance to corrosive media and minimizes valve wear. This leads to a longer service life and reduces the need for frequent maintenance, thereby lowering operating costs. Additionally, the WMAV features an automatic shut-off function. This reliably closes the valve in the event of pneumatic failure, preventing uncontrolled media leakage. It protects against contamination of the production environment and significantly contributes to maintaining process safety. Say goodbye to trailing media strands at the dosing end: the closing movement of the outlet needle creates a slight vacuum, drawing the medium back into the dispensing tip, ensuring a clean media cut-off.

The Walther Membrane Outlet Valve (WMAV) is pneumatically operated, reliably functioning at operating pressures of up to 150 bar, and offers outstanding dosing accuracy due to precise pressure and time control. With available extensions such as piston query or a pressure sensor, it provides essential options for process monitoring. The also available, easily attachable heating plate for medium heating allows direct influence on the flow behavior of the medium being applied.

In summary, the Walther Membrane Outlet Valve offers a combination of precision, safety, and durability. It fully meets the requirements of modern manufacturing environments, where reliable, precise, and efficient application of high-viscosity lubricants, adhesives, or sealants plays a crucial role.

Follow the QR code for more information



Technical Data

Operating Pressure
max. 150 [bar]

Operating Temperature
-10 to +40 [°C]

Overall Height
Size1: 120,8 [mm]
Size2: 120,8 [mm]
Size3: 164 [mm]

Width / Depth
(square cross-section)
Size1: 40 [mm]
Size2: 40 [mm]
Size3: 60 [mm]

Media Inlet Connection
Size1: G 1/4"
Size2: G 1/4"
Size3: G 3/8"

Opening Width
Size1: 2 [mm²]
Size2: 4 [mm²]
Size3: 8 [mm²]

Viscosity Range
50 – 1000000 [cSt]

Media-contacting materials
stainless steel (1.4301), PTFE



Air Flo Spray Equipment Company

Innovative Thinking Producing Significant Results

6050 Stetson Hills Drive, #321
Colorado Springs, CO 80922
866.567.5804 toll free ph.
719.490.8070 fax
info@airfloeq.com